

## ODSL 200

Omnidirectional  
LED sector light

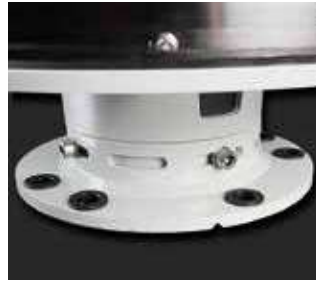
ODSL 200 omnidirectional sector light is an innovative, compact new sector light with accurate sector borders. This light is equipped with a replaceable LED optical unit. The range of the light, depending on colour and flash character, is between 6 and 10 NM ( $T_c = 0,74$ ).

- Sectors are fully verified at Sabik's photometric range prior to delivery
- Field installation is easy thanks to a rotation mechanism in the base
- Precision alignment, at site, can be done with a gun sight (has to be ordered separately)
- After installation sector alignments remain unchanged even if the LED optical unit is replaced
- Light can be delivered with an external weather cover
- The standard sector light is available as a 3, 6 or 12 layer model
- Small area of uncertainty between the sectors, typically less than  $0,5^\circ$
- Integrated flasher with daylight switch and a 16 ampere solar panel charger
- Programmable with Sabik standard IR programming devices
- This light can be equipped with remote monitoring, synchronization and optical feedback
- Patented omni-directional LED sector light technology
- Equipped with Bluetooth programming





**Optics**  
Optics designed for high intensity LEDs.



**Adjustment**  
Rotation mechanism in basement.



**Replaceable LED unit**  
LED optical unit is separated from the sector plate.



**IR port and photocell**  
Combined infrared communication port and photocell is located on the base of the lantern.



**Installation**  
The bottom plate supports installation on structures using 3 x M12 bolts or 4 x M12 bolts on a 200mm diameter.



**Protection**  
Weather cover as option. Protects the lantern in outdoor installations.



**High protection degree**  
The PTFE breathing vent for pressure release in the bottom of the LED optical unit.

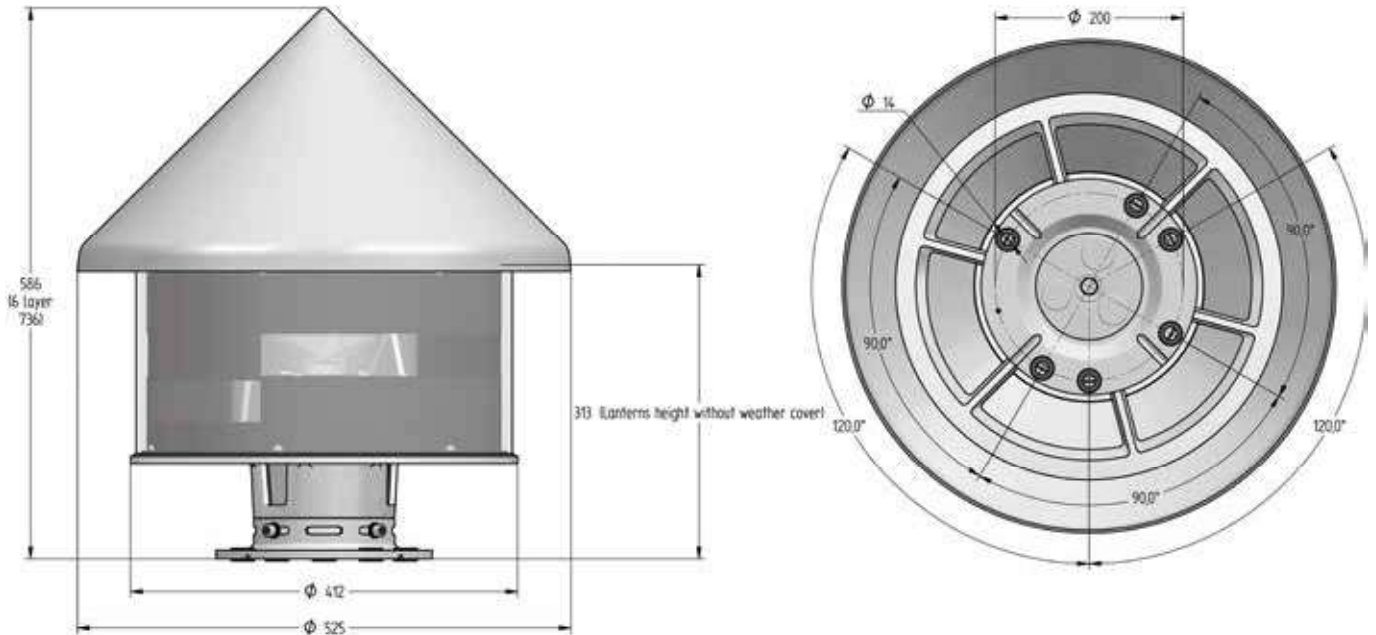


**Sabik Easy Programmer**  
User friendly and compact wireless two-way programmer.



**Equipped with Bluetooth programming**  
Bluetooth control- Lantern can be programmed and controlled up to 50 meters distance with standart android and IOS mobile phones.

## Technical Specification ODSL 200



### Optical performance

#### Maximum fixed intensity per tier and colour

Max power 3,5 W	<b>250 cd</b>	<b>250 cd</b>	<b>600 cd</b>
-----------------	---------------	---------------	---------------

When using weather cover reduce 6 % intensity.

### Main Technical Specification

<b>Lens visual/Mechanical diameter</b>	200 mm
<b>Lens material</b>	UV stabilized Acrylic
<b>Light source</b>	High Power Light Emitting Diodes
<b>Vertical divergence</b>	2°@50% of peak intensity (FWHM)
<b>Unit lifetime</b>	Up to 10 years
<b>Weight lantern</b>	3-tier 10,5 kg, 6-tier 13,4 kg, 12-tier 22,4 kg
<b>Weight including weather cover</b>	3-tier 14 kg, 6-tier 17,4 kg, 12-tier 26,4 kg
<b>Height</b>	3-tier 577 mm, 6-tier 727 mm, 12-tier 1027 mm
<b>Temperature range</b>	-40° – +60°C
<b>Supply Voltage</b>	10 – 32 VDC
<b>Solar panel charger</b>	16 ampere PWM charger
<b>Power consumption</b>	3,5 watts/tier
<b>Degree of protection</b>	IP 67

## Order Overview ODSL 200

### Option matrix

<b>OPT 4: GPS sync</b>	Integrated GPS sync with external GPS antenna
<b>OPT 7: External GPS</b>	External GPS antenna for OPT4 and OPT9
<b>OPT 9: LightGuard GSM + GPS</b>	Integrated GSM based monitoring with external antennas
<b>OPT 10: LightGuard GSM</b>	Integrated GSM based monitoring with external GSM antenna

### Product codes

#### ODSL 200

ODSL 200 3, 3 layer lantern

ODSL 200 6, 6 layer lantern

ODSL 200 12, 12 layer lantern

#### ODSL 200 WEATHER COVER

ODSL 200 3WC, 3 layer weather cover

ODSL 200 6WC, 6 layer weather cover

ODSL 200 12WC, 12 layer weather cover

#### Gun sight for exact alignment

821035