



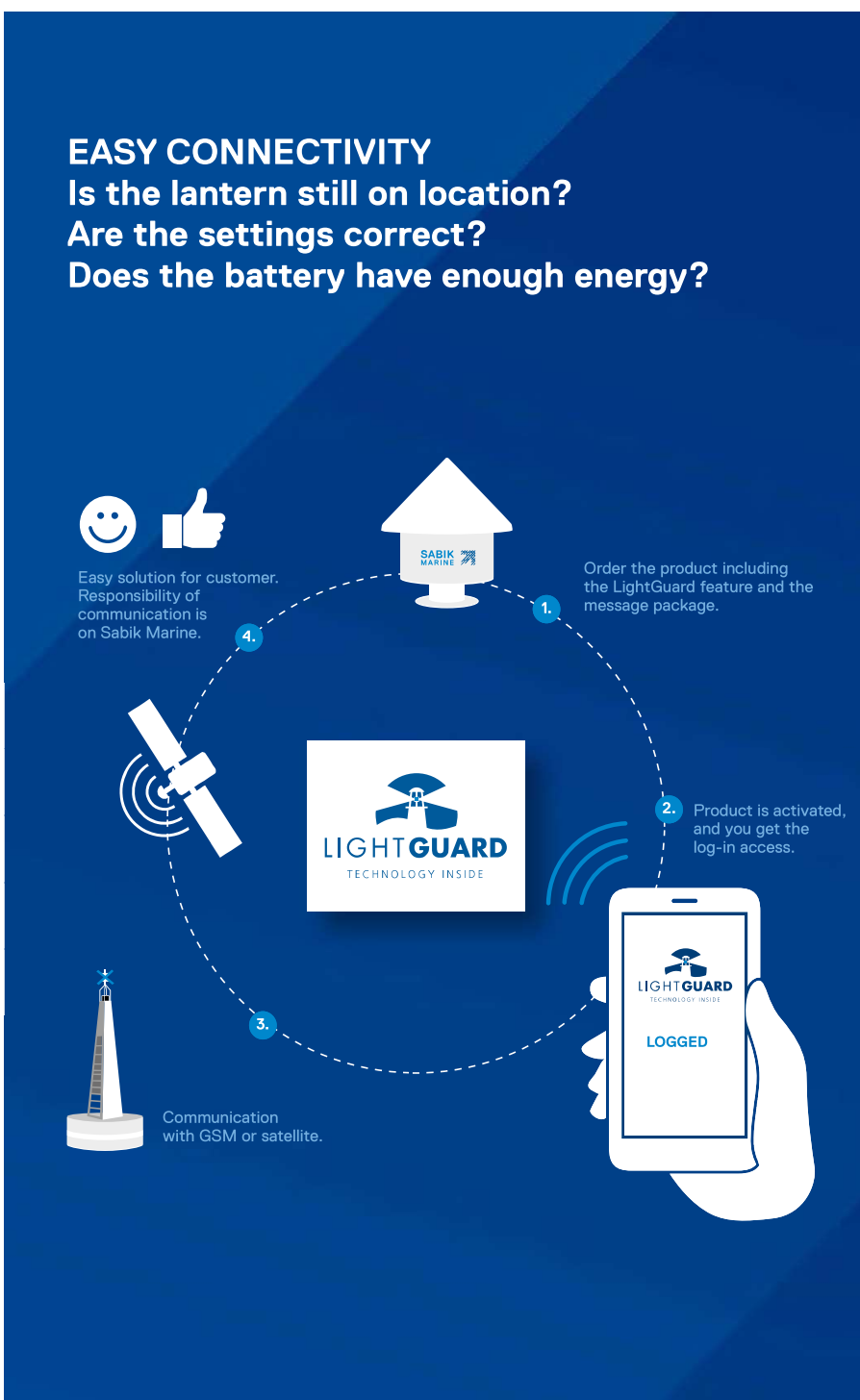
LightGuard Monitor

LightGuard Monitor is an intelligent web-based solution for monitoring fixed and floating aids-to-navigation. The responsive online app allows you to use it on any web-enabled computer, tablet or smartphone. Different views provide you detailed status reports on your stations, for example battery voltage and the position of the buoy.

Advantages

The key advantage of the LightGuard Monitor is peace of mind. Realtime status provides you with valuable information that your marine lantern is in its correct position and operating as planned. In case of a failure, an alarm will be triggered immediately and you will be able to take action proactively to ensure marine safety.

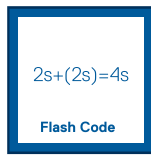
Realtime status also generates cost-savings and increased efficiency with maintenance optimization, for example.



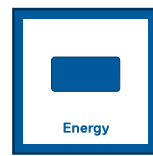
LightGuard Functions (availability depending on LightGuard product)



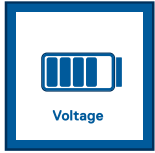
LightFunction
Basic information about the state of the light; active or inactive



Flash Code
On flashing beacons the LightGuard can report the programmed flash code running based on the measured supply current to the light



Energy
Ampere-hour counting; lantern consumption and solar system production



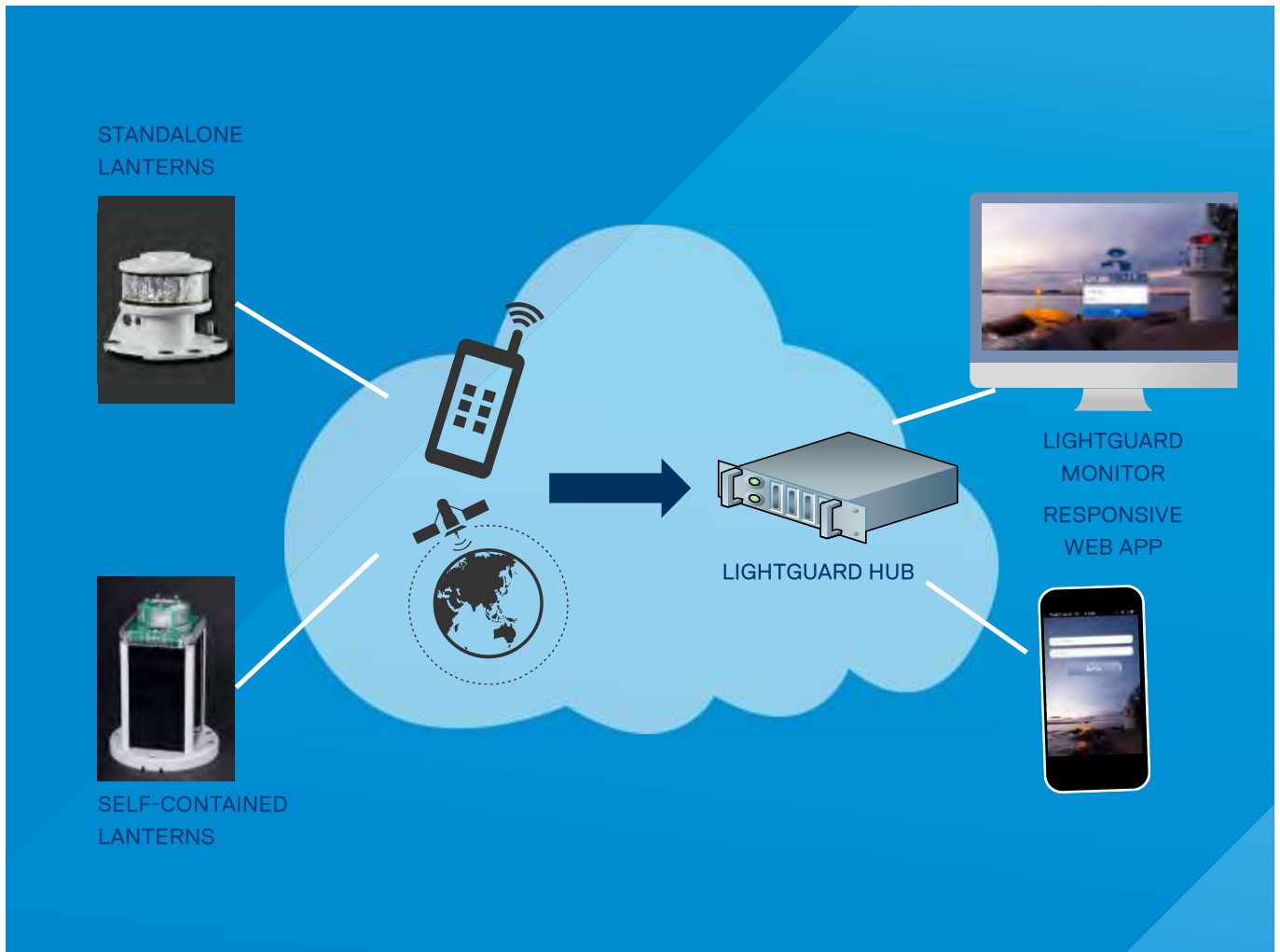
Voltage
Battery voltage and temperature



Position
Position of the AtoN



Off Location
Alarm if the AtoN moves outside of the defined boundaries

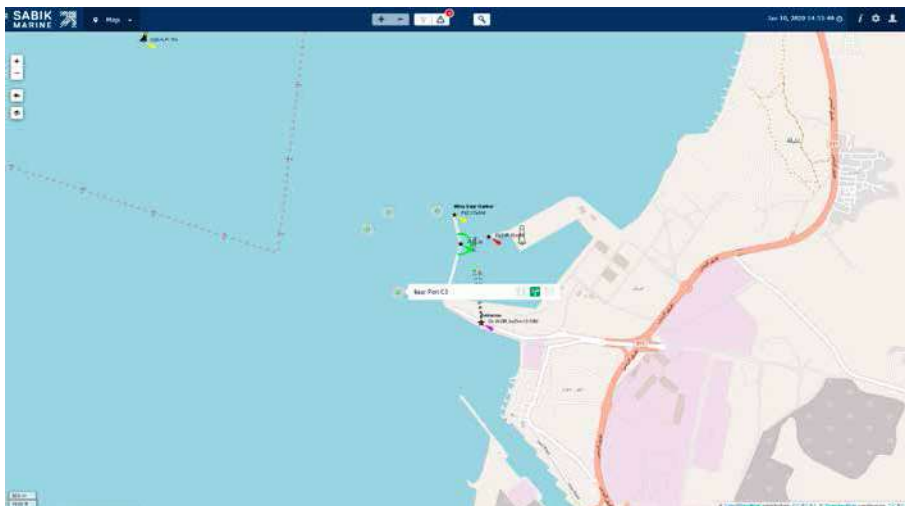


LightGuard Architecture

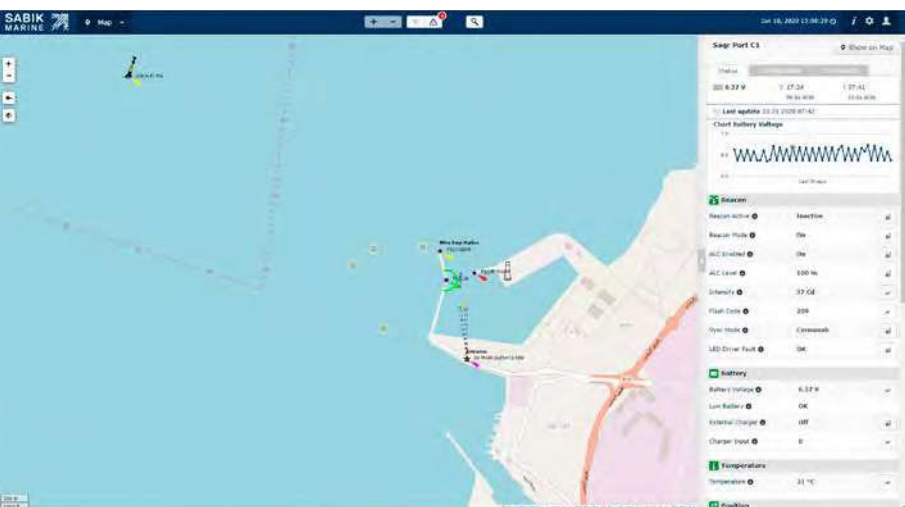
Real-time data is communicated from fixed or floating AtoN to LightGuard cloud based server. LightGuard Monitor displays the data on laptop, smartphone or tablet.



LightGuard Monitor has clear and user-friendly interface



Overview of fixed or floating AtoNs on a map view



Status information of a specific AtoN