



GRUPO

**LINDLEY**

ESTABLISHED 1930





# ABOUT US

Grupo Lindley is an industrial group comprising four companies, each one being a leader in its own market.

Based in Lisbon, Barcelona and London, we have a global reach, with a particular emphasis on operations in Europe, Africa and South America.



Headquarters in Cascais (Portugal)

**GRUPO**  
**LINDLEY**



**Aids to Navigation**

Design, fabrication, installation and maintenance of marine aids to navigation

**Cargo Handling**

Supply and maintenance and recycling of cargo handling & industrial lifting equipment

**Marinas and Harbours**

Design, fabrication, installation and maintenance of floating solutions for marinas and harbours

**Marine Engineering & Technology**

Engineering services and development of new technologies for maritime applications

# OUR STORY



Paper

1930

**AHLERS LINDLEY**  
Founded in Lisbon  
Paper distribution



Mines



Metals



Machinery



Machinery



Marinas

1985

**ALMOVI - Cranes**  
**ALMEC - Compressors**  
**ALCOPEL - Paper**  
**ALQUEMA – Chemicals**  
**FLORESTAL - Forestry**  
Spin off

Marinas



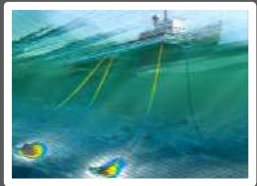
2004

**ALMARIN**  
Founded in Barcelona  
Aids to Navigation



2015

**LINDLEY BR**  
Rio de Janeiro  
Marinas



2016

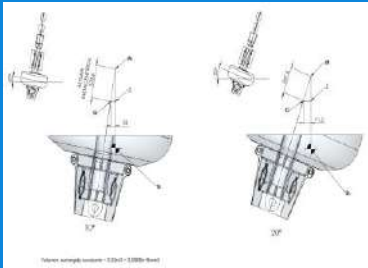
**SALT TECHNOLOGIES**  
London  
Marine Technologies



GRUPO  
**LINDLEY**

- Offices
- Projects

# SERVICES



Engineering, Design and Manufacture



Project and Operations Management



Distribution and Integration  
of Equipments



Installation, Maintenance  
and Aftersales Service

# OUR CUSTOMERS

Port & Maritime Authorities

Marinas, Fishing Ports & Leisure Docks

Hydrographic, Oceanographic  
& Governmental Institutes

Private Entities & Developers

Harbour & Offshore Operators

Engineering, Consultants & Contractors



# BUSINESS AREAS

## Aids to Navigation

Buoys, Beacons, Marine  
Lanterns and Lighthouses



## Marinas and Harbours

Wave Attenuators,  
Pontoons, Access Bridges  
and Ancillary Items



## Cargo Handling

Cranes for Harbours and  
Industry, Travelifts, Forklifts,  
Access Platforms



## Marine Technologies

Marine Engineering and  
Technology





# Business Areas



# Aids to Navigation

**ALMARIN** is a leading manufacturer of buoys and beacons for use in marine aids to navigation.

# Aids to Navigation



Buoys



Beacons and Towers



Lantern Rooms



Special Buoys



Monitoring



LED Range Lights



Self-Contained Lanterns



AIS and Racon





Our team is composed of experienced naval architects, civil engineers and designers. We design, test and update our buoys and beacons.

Engineering





Valletta, Malta

**ALMARIN** is a leading manufacturer of buoys and beacons for marine aids to navigation, besides being distributor of LED marine lanterns. **ALMARIN** is an industrial member of IALA since 2008.

# Aids to Navigation



Cartagena, Colombia





País Vasco, Spain

# Marine Beaconing

**ALMARIN** has developed several projects for marine beaconing in **Europe, Africa and South America.**



Orinoco , Venezuela





Islas Canarias, Spain

# Coastal Beaconing

ALMARIN has developed several projects for river beaconing in **Europe, Africa and South America.**



Panamá





Barranquilla, Colombia

# River Beaconing

ALMARIN has developed several projects for river beaconing in **Europe**, **Africa** and **South America**.



Palmeira, Cape Verde





Mahón, Spain

**ALMARIN** develops beaconings for special conditions such as articulated buoys and spar buoys to install at the entrances of ports or to mark shallow waters and pole buoys for rivers.

## Special Beacons



Guadiana, Portugal



# Lantern Rooms



Bugio, Portugal



Cap de Creus, Spain

Lantern rooms maximize lifetime and reduce maintenance of lighthouses. Manufactured in stainless steel with replaceable lens.



Povoa de Varzim, Portugal

Grupo Lindley collaborates with one of the most experienced manufacturers of meteorological and oceanographic data buoys. We supply the hulls for directional wave and data acquisition buoys.

# Data Acquisition & Oceanography



Viana do Castelo, Portugal



# Marinas & Harbours

LINDLEY is specialized in the manufacture, installation and maintenance of floating solutions for marinas and harbours.





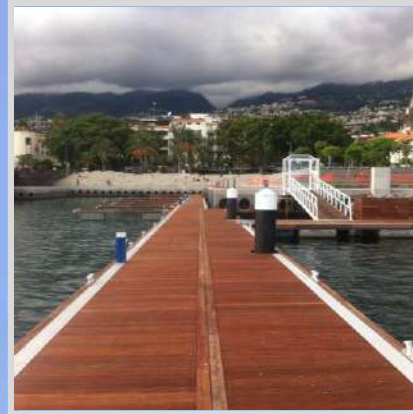
# Floating Equipment



Wave Attenuators



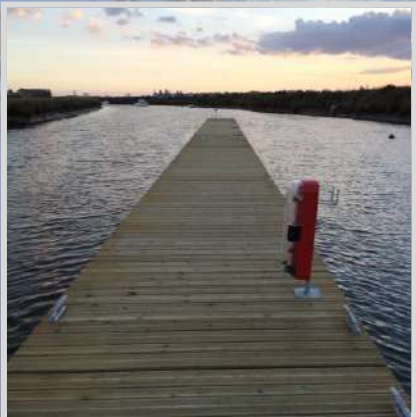
Concrete Pontoons



Steel Pontoons



Aluminium Pontoons



Timber Pontoons



Floating Platforms



Access Bridges  
and Ramps



Mooring Systems





Our team is composed of experienced naval architects, civil engineers, architects and designers. We design, test and update our floating solutions.

Engineering







Oeiras, Portugal

**LINDLEY** is focused on the design, construction and maintenance of floating solutions for marinas and harbours, offering a comprehensive range of equipment from floating wave attenuators to access bridges.

## Marinas and Harbours



Lisbon, Portugal





Calheta, Madeira

**LINDLEY** has the capability to design and build a complete marina involving pontoons, access, moorings and services.

## Marinas and Harbours



Rio de Janeiro, Brazil





Tróia, Portugal

**LINDLEY** has the capability to design and build a complete marina involving pontoons, access, moorings and services.

# Wave Attenuators & Heavy Duty Pontoons



Valletta, Malta

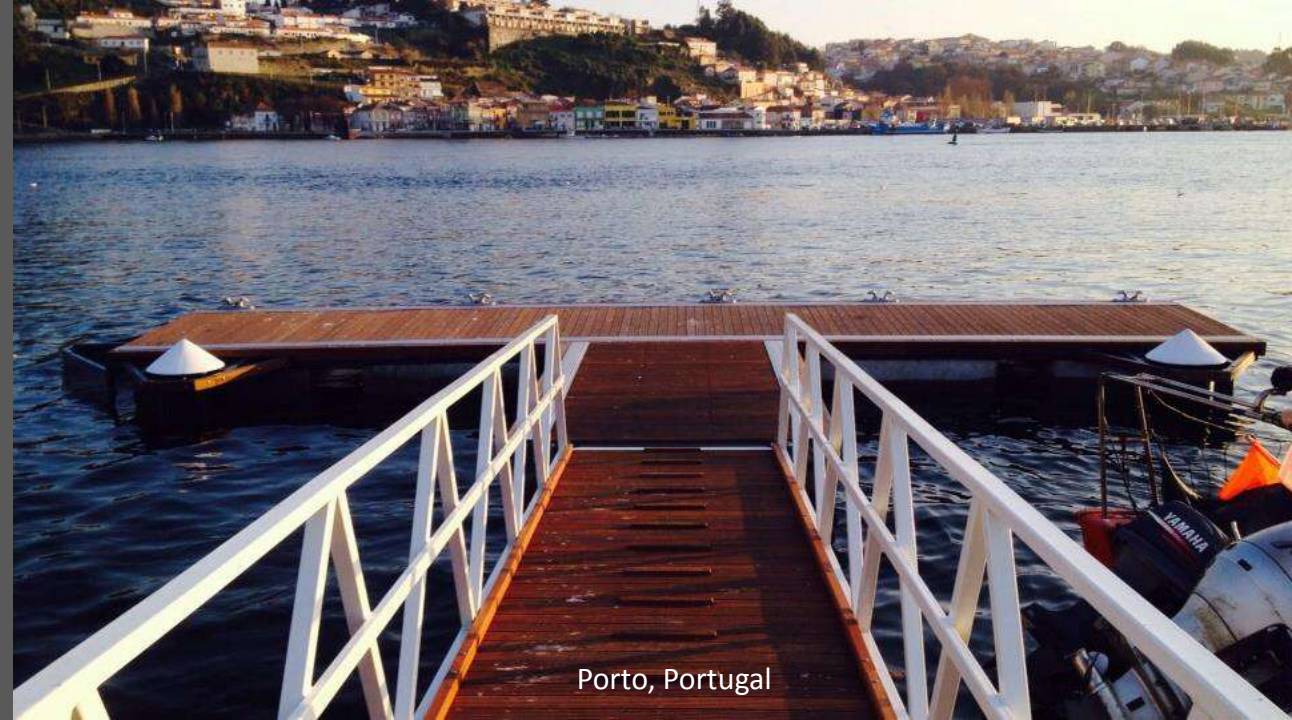




Cuando-Cubango, Angola

Solutions are designed to meet the requirements of each application and site.

# River Landings



Porto, Portugal



Aldeia da Luz, Portugal

Solutions are designed to meet the requirements of each application and site.

# River Landings



Castro Marim, Portugal





Vale Manso, Portugal

Landings are designed for rivers and waterways, suitable to locations with current and water level variation.

# River Landings



Aveiro, Portugal



Mussulo, Angola

Turnkey solutions suitable to different requirements, meeting special demands from developers and architects, and integrated in the local environment.

## Private Docks & Jetties



Douro, Portugal





# Cargo Handling

ALMOVI is a company specialized in cranes, aerial platforms and cargo handling equipment.



# Cargo Handling Equipment



Maritime Cranes



Used Equipment



Mobile Telescopic Cranes



Maintenance



Aerial Work Platforms



Travelifts



Forklifts



Parts





Portugal

**ALMOVI** is a company specialized in the supply and service of cargo handling equipment, as mobile telescopic cranes, aerial works platforms, heavy duty & ship to shore cranes.

# Cargo Handling



Portugal



Porto, Portugal

**ALMOVI** provides a comprehensive range of products able to meet your lifting needs. Our machines includes a full range of rough-terrain designed to handle the tough conditions of the area.

# Cargo Handling



Lisbon, Portugal





Leixoes, Portugal

# Harbour Cranes

ALMOVI has supplied several harbour cranes for Port Authorities in **Portugal** and **Africa**.





Portugal

ALMOVI offers different types of lifting platforms such as articulated, telescopic boom and slab scissor lifts.

# Aerial Work Platforms



Portugal



Garrucha, Spain



The technicians offer a complete service, from the recommendation of the most appropriate equipment to assembly and turnkey work, staff training and after-sales service.

## Boat Hoists



Altea, Spain



Portugal

**ALMOVI** provide full assistance: whether you are interested in selling your machine, buying an old one or simply refit your old equipment at competitive prices. We also supply a wide range of spare parts of all types of cranes.

## Refit & Parts

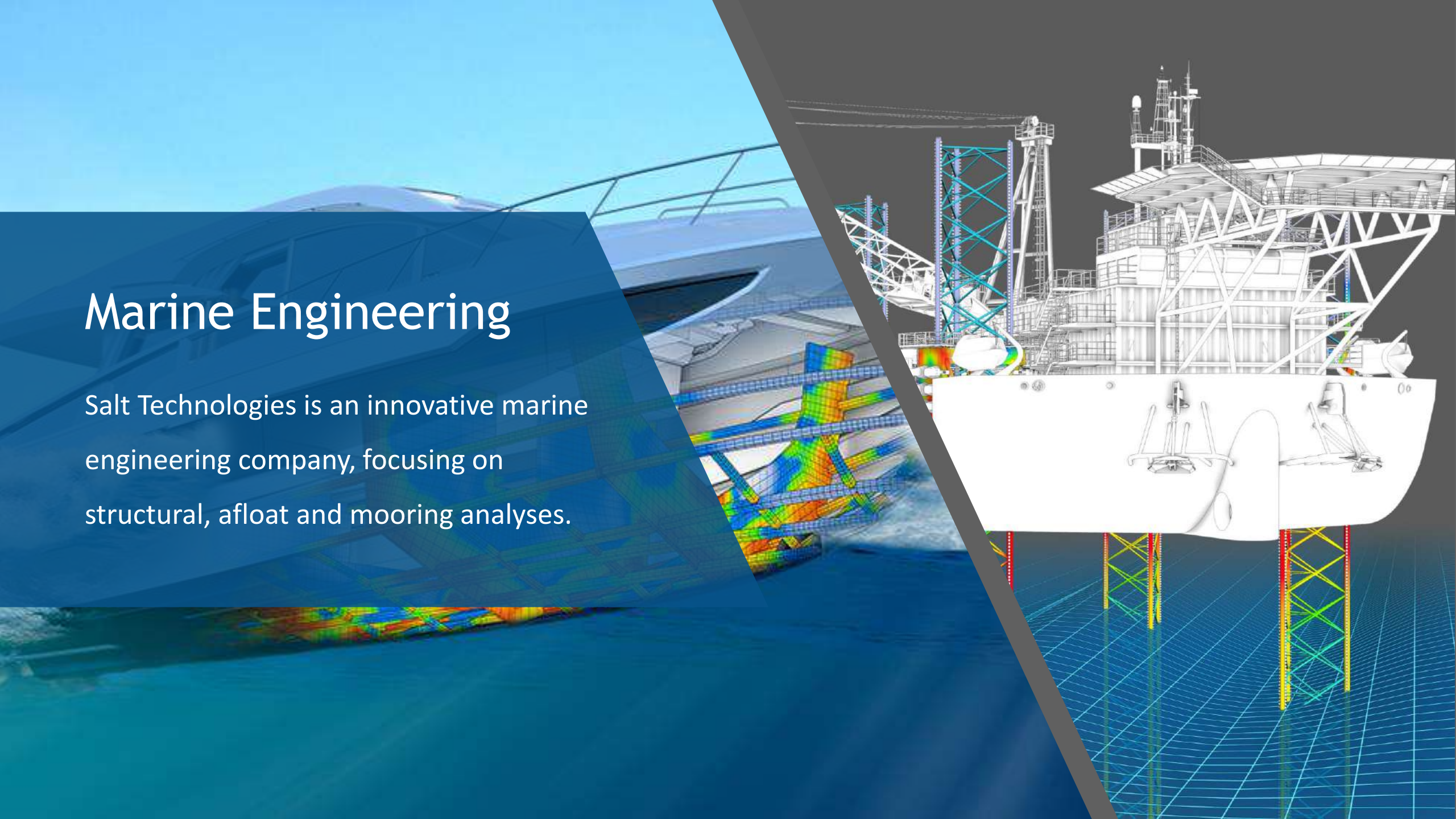


Portugal



# Marine Engineering

Salt Technologies is an innovative marine engineering company, focusing on structural, afloat and mooring analyses.

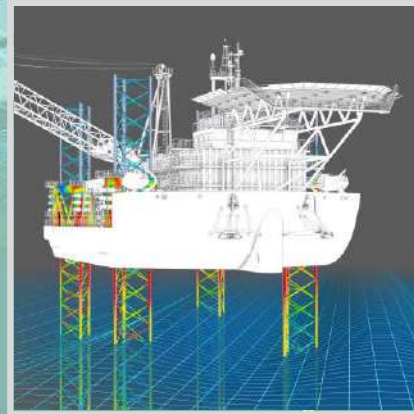




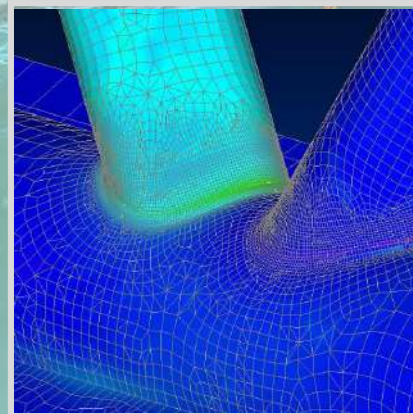
# Marine Engineering



Mooring Systems



Jack-Ups Engineering



Numerical Modeling



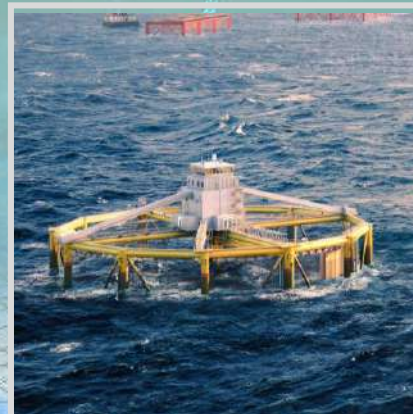
Segmental Pontoons



Floating Structures

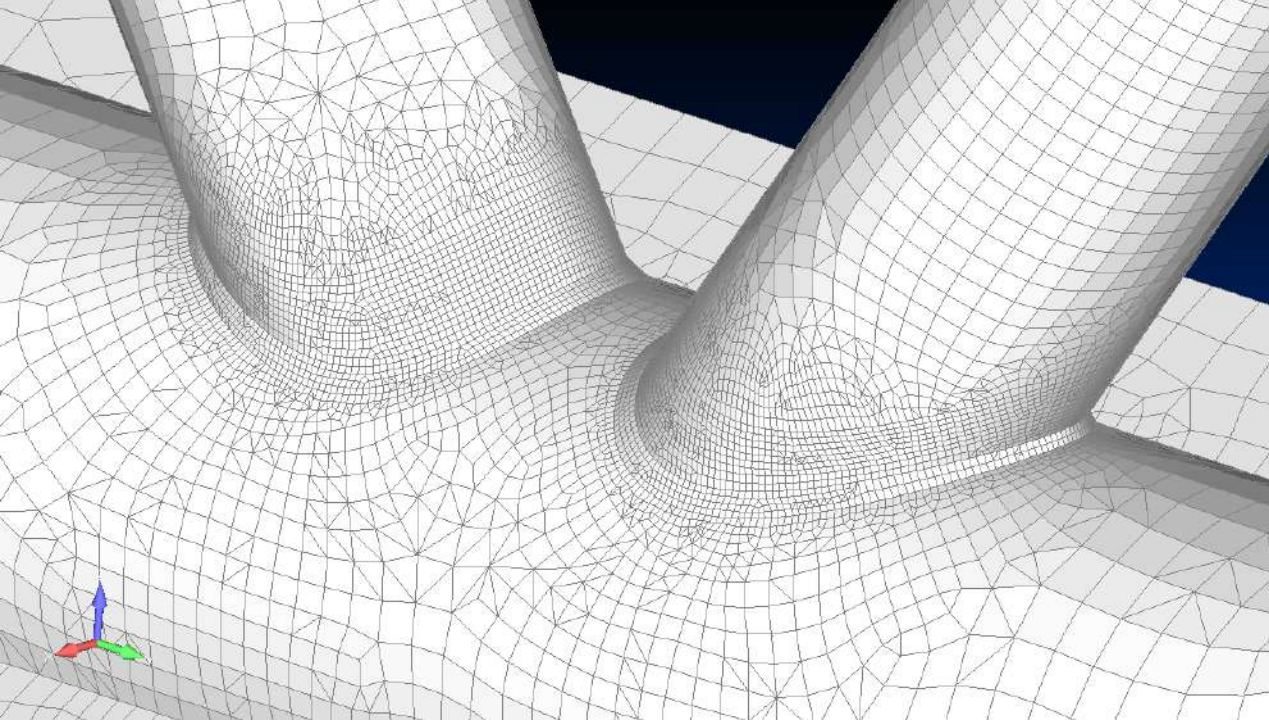


Virtual Reality



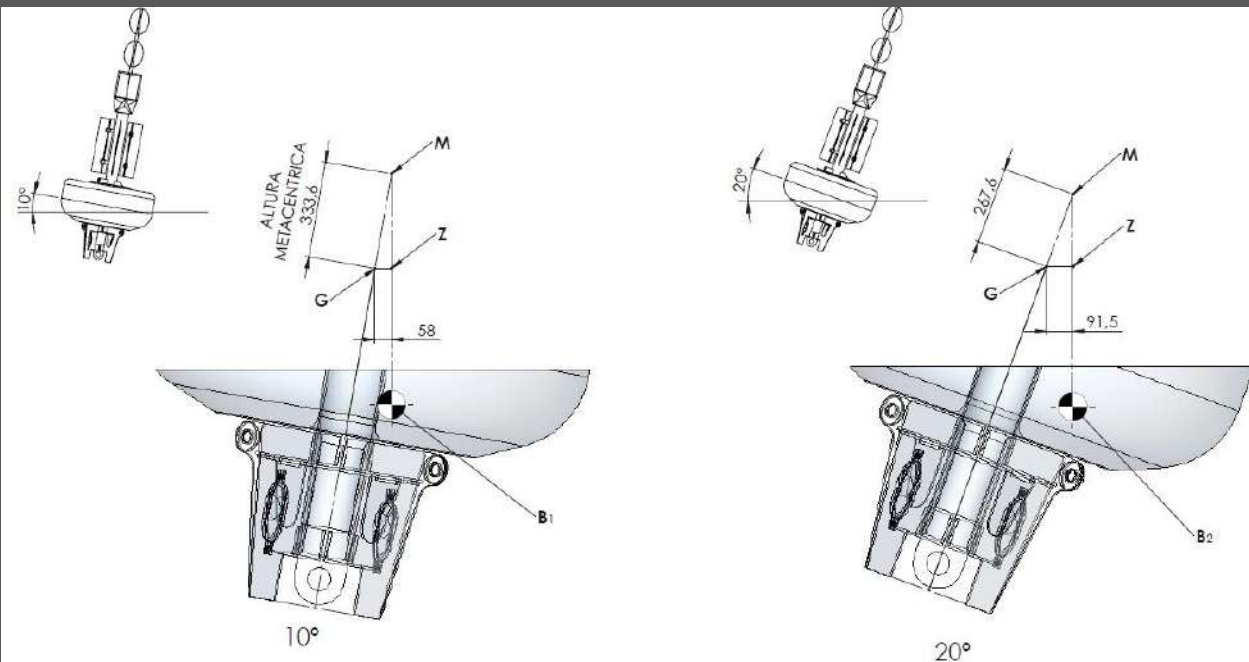
Digital Content





With a strong background in offshore oil & gas and renewables, **SALT TECHNOLOGIES** is an engineering company focusing on the analysis and design of floating structures and mooring systems.

# Engineering





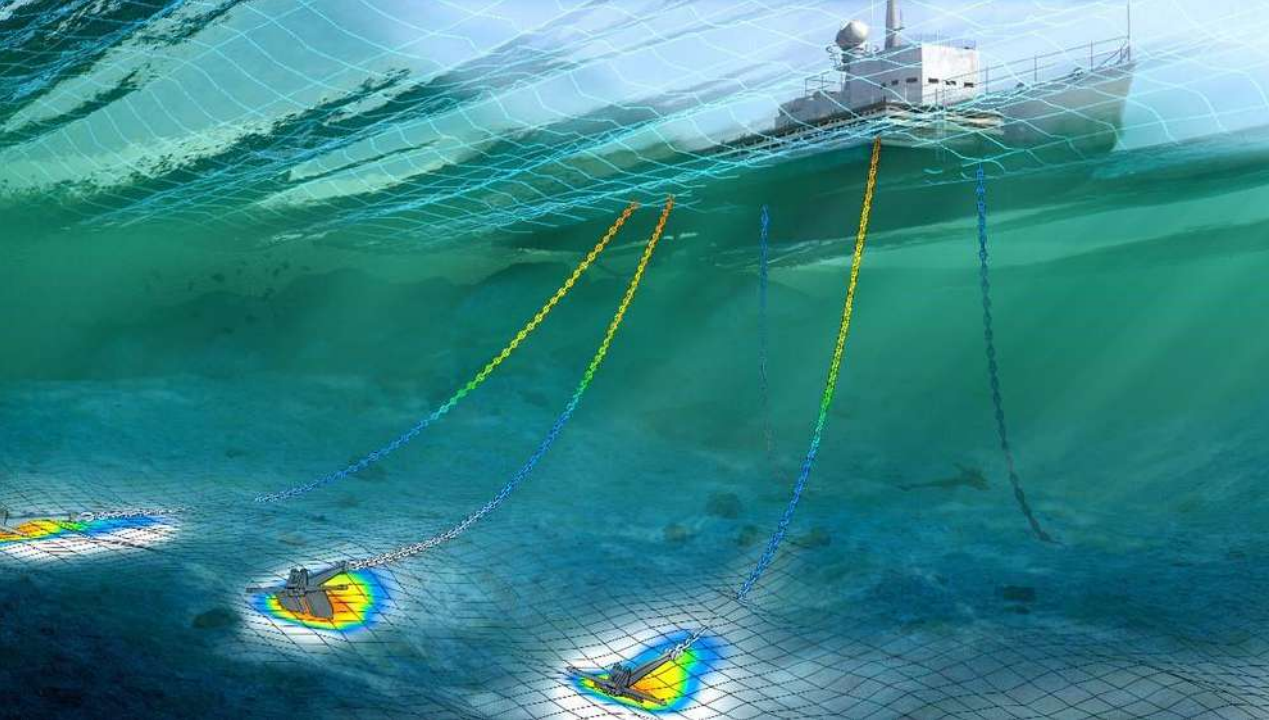
**SALT TECHNOLOGIES** focuses on the following areas:

- Structural Engineering, Stability & Motions
- Mooring Analysis & Design
- Coastal Environment Modelling
- Marketing Digital Content

Engineering  
& Technologies







**SALT TECHNOLOGIES** focuses on the following areas:

- Structural Engineering, Stability & Motions
- Mooring Analysis & Design
- Coastal Environment Modelling
- Marketing Digital Content

Engineering  
& Technologies



# Supplier or partner? Up to you to decide!



## ALMARIN

C/Costa Brava, 25-29  
08030 Barcelona (SPAIN)  
+34 933 601 101

✉ [info@almarin.es](mailto:info@almarin.es)

## ALMOVI

Edificio MICAL, Estrada de Manique-1896  
2645-550 Alcabideche (PORTUGAL)  
+351 214 690 341

✉ [almovi@almovi.pt](mailto:almovi@almovi.pt)

## LINDLEY

Edificio MICAL, Estrada de Manique-1896  
2645-550 Alcabideche (PORTUGAL)  
+351 21 469 2024

✉ [geral@lindley.pt](mailto:geral@lindley.pt)

## SALT TECHNOLOGIES

13 Stonells road,  
London, SW11 6HQ (United Kingdom)  
+44 (0)77 6839 5968

✉ [contact@salttechnologies.uk](mailto:contact@salttechnologies.uk)